



TRUCK CRANE

TG-600M

TG

JAPANESE SPECIFICATIONS

CARRIER MODEL	OUTLINE	SPEC. NO.
NISSAN DIESEL P-KG53W	5-section Boom, 3-stage Jib	TG-600M-1-10101

Control No. JA-03



TG-600M-1-10101

TG-600M

CRANE SPECIFICATIONS

CRANE CAPACITY

11.0m Boom	60,000kg	at 3.5m	(12 part-line)
18.8m Boom	35,000kg	at 5.0m	(7 part-line)
26.5m Boom	23,000kg	at 6.0m	(5 part-line)
34.3m Boom	15,000kg	at 8.0m	(4 part-line)
42.0m Boom	8,000kg	at 12.0m	(2 part-line)
9.0m Jib	4,500kg	at 78°	(1 part-line)
15.0m Jib	2,800kg	at 78°	(1 part-line)
20.2m Jib	1,700kg	at 78°	(1 part-line)
Single top	4,500kg		(1 part-line)

MAX. LIFTING HEIGHT

Boom 41.5m
Jib 61.0m

MAX. WORKING RADIUS

Boom 28.0m (Standard)
34.0m (With device for heavy-duty work)
Jib 36.3m (Standard)
43.0m (With device for heavy-duty work)

BOOM LENGTH

11.0m – 42.0m

BOOM EXTENSION

31.0m

BOOM EXTENSION SPEED

31.0m / 128s

JIB LENGTH

9.0m, 15.0m, 20.2m

MAIN WINCH SINGLE LINE SPEED

High range: 100m/min (3rd layer)
Low range: 50m/min (3rd layer)

MAIN WINCH HOOK SPEED

High range: 8.3m/min (12 part-line)
Low range: 4.2m/min (12 part-line)

AUXILIARY WINCH SINGLE LINE SPEED

High range: 106m/min (2nd layer)
Low range: 53m/min (2nd layer)

AUXILIARY WINCH HOOK SPEED

High range: 106m/min (1 part-line)
Low range: 53m/min (1 part-line)

BOOM ELEVATION ANGLE

-2° – 83°

BOOM ELEVATION SPEED

-2° – 83° / 67s

SWING ANGLE

360° continue

SWING SPEED

1.9 rpm

WIRE ROPE

Main Winch

20mm × 195m (Diameter × Length)
7 × 7 + 6 × WS(31) Class C Ordinary · Z twist
Spin-resistant wire rope
Breaking strength 29.3t

Auxiliary Winch

18mm × 140m (Diameter × Length)
7 × 7 + 6 × WS(31) Class C Ordinary · Z twist
Spin-resistant wire rope
Breaking strength 24.3t

HOOK

60 t hook (12 part-line)
15 t hook (3 part-line)
5 t hook (1 part-line)

BOOM

5-section power telescoping boom of hexagonal box construction
(stages 2,3: synchronized; stage 4,5: synchronized)

BOOM EXTENSION

3 double-acting hydraulic cylinder
1 wire rope type telescoping device

JIB

3-staged swingaround boom extensions.
(stages 2,3: pull-out type)
Dual (5°, 30°) offset

SINGLE TOP

Single sheave. Mounted to main boom head for single line work.

HOIST

Driven by hydraulic motor and via helical gear speed reducer.

With free-fall device.

Automatic brake (with foot brake for free-fall device)

2 single winches

BOOM ELEVATION

2 double-acting hydraulic cylinders

SWING

Hydraulic motor driven planetary gear reducer

Swing bearing

Hand brake

Swing free/lock changeover type

OUTRIGGERS

Fully hydraulic H-type (Floats mounted integrally)

Slides and jacks each provided with independent operation device.

Full extended width 7.2m

Middle extended width 4.6m

MAX. OUTRIGGER LOAD

57t

FRONT JACK

Hydraulic operated type

HYDRAULIC PUMPS

4 gear pumps

HYDRAULIC OIL TANK CAPACITY

820 liters

SAFETY DEVICES

Automatic moment limiter (AML-US)

Over-winding cutout

Level gauge

Over front area control device

Working area control device

Hook safety latch

Cable follower

Winch drum lock

Winch drum rotation indicator

Hydraulic safety valve

Telescopic counterbalance valve

Elevation counterbalance valve

Jack pilot check valve

Front jack over load alarm

EQUIPMENTS

Crane cab heater

Oil cooler

Boom angle indicator

Jib extending device

Radio

Fan

OPTIONAL EQUIPMENT

Device for heavy-duty work

**CARRIER SPECIFICATIONS****MANUFACTURER**

NISSAN DIESEL MOTOR CO., LTD

CARRIER MODEL

P-KG53W

ENGINE

Model RE8

Type 4-cycle V8-cylinder, direct-injection, water-cooled diesel engine

Piston displacement 15,115cc

Max. output 315PS at 2,300rpm

Max. torque 105kg·m at 1,400rpm

CLUTCH

Dry single-plate type

TRANSMISSION

9-forward and 1-reverse speeds

Constant-mesh gear

REDUCER

2-stage speed reduction type

FRONT AXLE

Reverse Elliot-type steel pipe cross section

REAR AXLE

Full floating, cast torque rods

SUSPENSION

Front REYCO type

Rear Equalizer and torque rods

STEERING

Recirculating ball screw type with linkage power assistance

BRAKE SYSTEM

Service Brake

2-circuit air brake, 8-wheels internal expanding brake

Parking Brake

Mechanically operated, duo-servo shoe type acting on drum at transmission case rear.

Auxiliary Brake

Electro-pneumatic operated exhaust brake

ELECTRIC SYSTEM

24 V DC. 2 batteries of 12V (120Ah)

FUEL TANK CAPACITY

300 liters

CAB

Two-man type

TIRES

Front 14.00-24-24PR

Rear 12.00-20-18PR

STANDARD EQUIPMENTS

Car heater

Car radio

GENERAL DATA**DIMENSIONS**

Overall length 13,925mm

Overall width 3,000mm

Overall height 3,790mm

Wheel base 1,500mm + 4,400mm + 1,400mm = 7,300mm

Tread Front 2,480mm

Rear 2,280mm

WEIGHTS

Gross vehicle weight

Total 43,180kg

Front 21,510kg

Rear 21,670kg

PERFORMANCE

Max. traveling speed 70km/h

Gradeability (tan θ) 0.36

Min. turning radius (Outermost wheel) 11.6m



TG-600M-1-10101

TOTAL RATED LOADS

(1) Standard specifications
(i)

Unit : ton

· Outriggers fully extended + Front jack (360°) · Outriggers fully extended (Over rear · Over sides)												
A \ B (m)	B (m)					C \ D \ E (°)	9.0 m		15.0 m		20.2 m	
	11.0 m	18.8 m	26.5 m	34.3 m	42.0 m		5°	30°	5°	30°	5°	30°
3.0	60.0	35.0				83	4.5	2.7	2.8	1.3	1.7	0.70
3.5	60.0	35.0				80	4.5	2.7	2.8	1.3	1.7	0.70
4.0	51.8	35.0				78	4.5	2.5	2.8	1.2	1.7	0.70
4.5	45.4	35.0				75	3.7	2.2	2.5	1.1	1.5	0.65
5.0	40.4	35.0	23.0			73	3.3	2.0	2.2	1.05	1.38	0.63
5.5	36.1	32.3	23.0			70	2.8	1.8	1.85	1.0	1.25	0.62
6.0	32.6	29.7	23.0			68	2.5	1.66	1.67	0.92	1.16	0.60
6.5	29.7	27.5	21.8	15.0		65	2.1	1.5	1.45	0.85	1.05	0.57
7.0	26.4	25.2	20.4	15.0		63	1.65	1.41	1.05	0.81	0.80	0.55
7.5	23.0	23.0	19.1	15.0		60	1.0	0.95	0.55	0.48		
8.0	20.3	20.3	18.0	15.0	8.0	58	0.70	0.63				
9.0	16.0	16.0	16.0	13.4	8.0							
10.0		12.75	12.75	12.2	8.0							
11.0		10.4	10.4	11.0	8.0							
12.0		8.55	8.55	9.45	8.0							
14.0		6.0	6.0	6.85	7.0							
16.0		4.2	4.2	5.1	5.85							
18.0			2.75	3.3	4.55							
20.0			1.65	2.75	3.55							
22.0			0.80	1.85	2.7							
24.0				1.2	2.0							
26.0				0.60	1.4							
28.0					0.90							

- A = Boom length
- B = Working radius
- C = Jib length
- D = Jib offset
- E = Boom angle

NOTES:

1. The total rated loads shown are for the case when the outriggers are set horizontally on firm ground. The values are based on the crane strength.
2. The weights of slings and hooks (600kg for a 60 ton capacity hook, 260kg for a 15 ton capacity hook and 140kg for a 5 ton capacity hook) are included in the total rated loads shown.
3. The total rated load is based on the actual working radius including the deflection of the boom.
4. The number of part lines for each boom length should not exceed the values below. The load per line should not exceed 5t for the main winch and 4.5t for the auxiliary winch.

A	11.0 m	18.8 m	26.5 m	34.3 m	42.0 m	J
H	12	7	5	4	2	1

A = Boom length H = No. of part-line J = Jib / Single top

5. The total rated loads for free-fall operations is 1/5 of the total rated loads given above. The load per line should not exceed 1t for the main winch and 0.9t for the auxiliary winch.
6. The total rated load for the single top is the same as that of the boom and must not exceed 4.5 tons. However, when hooks, slings, etc. are mounted on the boom, one should work with the total rated load obtained by subtracting the weights of the hooks, slings, etc. mounted on the boom from the total rated load of the boom.



(1) Standard specifications
(ii)

Unit : ton

• Outriggers middle extended (360°) • Outriggers fully extended (Over front)						Without outriggers (Over rear)					
B (m)	A	11.0 m	18.8 m	26.5 m	34.3 m	42.0 m	C	9.0 m		B (m)	11.0 m
	E (°)	D	5°	30°							
3.0	40.0	24.0					83	4.5	2.7	3.0	9.0
3.5	40.0	24.0					30	4.5	2.7	3.5	7.7
4.0	37.0	24.0					78	3.2	2.3	4.0	6.1
4.5	29.5	24.0								4.5	5.25
5.0	22.4	23.95	15.0							5.0	4.7
5.5	18.45	18.45	15.0							5.5	4.25
6.0	14.6	14.6	14.6							6.0	3.8
6.5	11.95	11.95	11.95	10.0						6.5	3.4
7.0	9.9	9.9	9.9	10.0						7.0	3.0
7.5	8.35	8.35	8.35	9.25						7.5	2.6
8.0	7.05	7.05	7.05	7.95	5.5					8.0	2.3
9.0	5.1	5.1	5.1	5.95	5.5					9.0	1.5
10.0		3.65	3.65	4.55	5.5						
11.0		2.6	2.5	3.5	4.4						
12.0				2.6	3.5						
14.0					2.15						

A = Boom length
 B = Working radius
 C = Jib length
 D = Jib offset
 E = Boom angle

NOTES:

- The total rated loads shown are for the case when the outriggers are set horizontally on firm ground. The values are based on the crane strength.
- The weights of slings and hooks (600kg for a 60 ton capacity hook, 260kg for a 15 ton capacity hook and 140kg for a 5 ton capacity hook) are included in the total rated loads shown.
- The total rated load is based on the actual working radius including the deflection of the boom.
- The number of part lines for each boom length should not exceed the values below. The load per line should not exceed 5t for the main winch and 4.5t for the auxiliary winch.

A	11.0 m	18.8 m	26.5 m	34.3 m	42.0 m	J
H	12	7	5	4	2	1

A = Boom length H = No. of part-line J = Jib / Single top

- The total rated loads for free-fall operations is 1/5 of the total rated loads given above. The load per line should not exceed 1t for the main winch and 0.9t for the auxiliary winch. Free-fall operations should not be performed without the outriggers.
- The total rated load for the single top is the same as that of the boom and must not exceed 4.5 tons. However, when hooks, slings, etc. are mounted on the boom, one should work with the total rated load obtained by subtracting the weights of the hooks, slings, etc. mounted on the boom from the total rated load of the boom.



TG-600M-1-10101

(2) Specifications for the case when the device for heavy-duty work (option) is mounted

(i)

Unit : ton

· Outriggers fully extended + Front jack (360°) · Outriggers fully extended (Over rear · Over sides)												
A \ B (m)	A					C \ D \ E (°)	9.0 m		15.0 m		20.2 m	
	11.0 m	18.8 m	26.5 m	34.3 m	42.0 m		5°	30°	5°	30°	5°	30°
3.0	60.0	35.0				83	4.5	2.7	2.8	1.3	1.7	0.7
3.5	60.0	35.0				80	4.5	2.7	2.8	1.3	1.7	0.7
4.0	53.0	35.0				78	4.5	2.5	2.8	1.2	1.7	0.7
4.5	46.5	35.0				75	3.7	2.2	2.5	1.1	1.5	0.65
5.0	42.0	35.0	23.0			73	3.3	2.0	2.2	1.05	1.38	0.63
5.5	37.5	32.3	23.0			70	2.8	1.8	1.85	1.0	1.25	0.62
6.0	34.0	29.7	23.0			68	2.5	1.66	1.67	0.92	1.16	0.60
6.5	30.5	27.5	21.8	15.0		65	2.2	1.5	1.45	0.85	1.05	0.57
7.0	27.5	25.2	20.4	15.0		63	2.0	1.41	1.3	0.81	0.96	0.55
7.5	24.8	23.3	19.1	15.0		60	1.8	1.3	1.15	0.75	0.85	0.52
8.0	22.5	21.4	18.0	15.0	8.0	58	1.65	1.2	1.05	0.70	0.77	0.49
9.0	19.0	18.5	16.0	13.4	8.0	55	1.15	1.05	0.75	0.65	0.56	0.45
10.0		16.0	14.5	12.2	8.0	53	0.90	0.85	0.55	0.50		
11.0		13.4	13.0	11.0	8.0	50	0.55	0.50				
12.0		11.2	11.2	10.0	8.0							
14.0		8.1	8.1	8.4	7.0							
16.0		6.0	6.0	6.9	6.0							
18.0			4.45	5.35	5.3							
20.0			3.15	4.2	4.5							
22.0			2.15	3.15	3.9							
24.0			1.3	2.35	3.2							
26.0				1.7	2.5							
28.0				1.1	1.9							
30.0				0.65	1.4							
32.0					1.0							
34.0					0.6							

- A = Boom length
- B = Working radius
- C = Jib length
- D = Jib offset
- E = Boom angle

NOTES:

1. The total rated loads shown are for the case when the outriggers are set horizontally on firm ground. The values are based on the crane strength.
2. The weights of slings and hooks (600kg for a 60 ton capacity hook, 260kg for a 15 ton capacity hook and 140kg for a 5 ton capacity hook) are included in the total rated loads shown.
3. The total rated load is based on the actual working radius including the deflection of the boom.
4. The number of part lines for each boom length should not exceed the values below. The load per line should not exceed 5t for the main winch and 4.5t for the auxiliary winch.

A	11.0 m	18.8 m	26.5 m	34.3 m	42.0 m	J
H	12	7	5	4	2	1

A = Boom length H = No. of part-line J = Jib / Single top

5. The total rated loads for free-fall operations is 1/5 of the total rated loads given above. The load per line should not exceed 1t for the main winch and 0.9t for the auxiliary winch.
6. The total rated load for the single top is the same as that of the boom and must not exceed 4.5 tons. However, when hooks, slings, etc. are mounted on the boom, one should work with the total rated load obtained by subtracting the weights of the hooks, slings, etc. mounted on the boom from the total rated load of the boom.



**(2) Specifications for the case
when the device for heavy-duty work (option) is mounted
(ii)**

Unit : ton

· Outriggers middle extended (360°) · Outriggers fully extended (Over front)						Without outriggers (Over rear)											
A B (m)	11.0 m	18.8 m	26.5 m	34.3 m	42.0 m	C D E (°)	9.0 m	15.0 m	20.2 m	A B (m)	11.0 m						
	5°	30°	5°	30°	5°		30°	3.0	3.5		4.0	4.5	5.0	5.5	6.0	6.5	7.0
3.0	40.0	24.0				83	4.5	2.7	2.8	1.3	1.7	0.7	3.0	8.0			
3.5	40.0	24.0				80	4.5	2.7	2.8	1.3	1.7	0.7	3.5	6.4			
4.0	40.0	24.0				78	4.5	2.5	2.8	1.2	1.7	0.7	4.0	5.1			
4.5	38.0	24.0				75	3.7	2.2	1.9	1.1	1.4	0.65	4.5	4.55			
5.0	30.0	24.0	15.0			73	3.3	1.9	1.35	1.05	0.95		5.0	4.05			
5.5	24.8	24.0	15.0			70	1.8	1.0					5.5	3.6			
6.0	20.8	20.8	15.0										6.0	3.15			
6.5	17.55	17.55	15.0	10.0									6.5	2.8			
7.0	14.8	14.8	14.8	10.0									7.0	2.4			
7.5	12.65	12.65	12.65	10.0									7.5	2.1			
8.0	10.95	10.95	10.95	10.0	5.5								8.0	1.8			
9.0	8.35	8.35	8.35	9.25	5.5								9.0	1.0			
10.0		6.50	6.50	7.35	5.5												
11.0		5.1	5.1	5.95	5.5												
12.0		3.95	3.95	4.85	5.5												
14.0		2.15	2.15	3.2	4.0												
16.0		0.95	0.90	1.95	2.3												
18.0				1.0	1.85												
20.0					1.1												

A = Boom length
B = Working radius
C = Jib length
D = Jib offset
E = Boom angle

NOTES:

- The total rated loads shown are for the case when the outriggers are set horizontally on firm ground. The values are based on the crane strength.
- The weights of slings and hooks (600kg for a 60 ton capacity hook, 260kg for a 15 ton capacity hook and 140kg for a 5 ton capacity hook) are included in the total rated loads shown.
- The total rated load is based on the actual working radius including the deflection of the boom.
- The number of part lines for each boom length should not exceed the values below. The load per line should not exceed 5t for the main winch and 4.5t for the auxiliary winch.

A	11.0 m	18.8 m	26.5 m	34.3 m	42.0 m	J
H	12	7	5	4	2	1

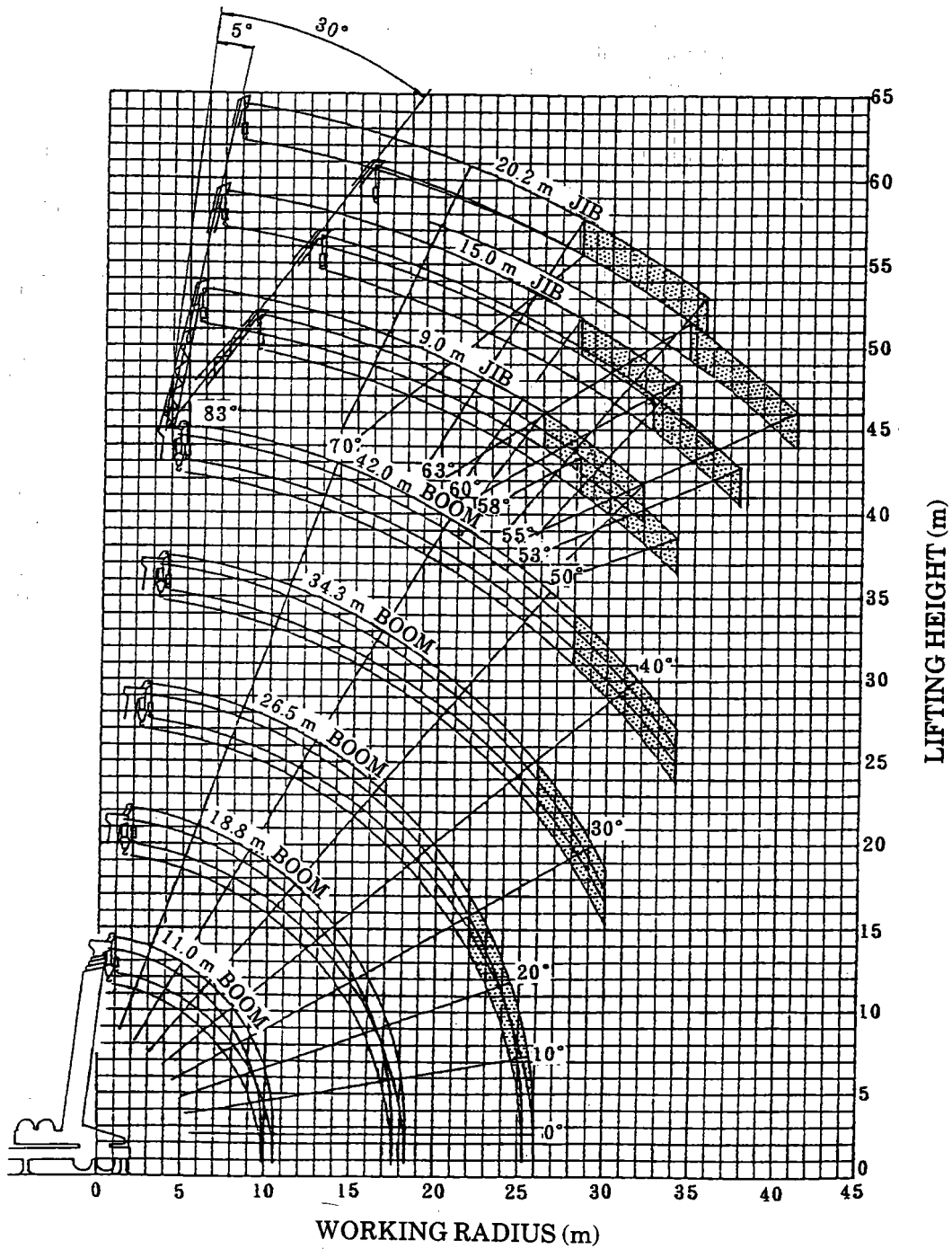
A = Boom length H = No. of part-line J = Jib / Single top

- The total rated loads for free-fall operations is 1/5 of the total rated loads given above. The load per line should not exceed 1t for the main winch and 0.9t for the auxiliary winch. Free-fall operations should not be performed without the outriggers.
- The total rated load for the single top is the same as that of the boom and must not exceed 4.5 tons. However, when hooks, slings, etc. are mounted on the boom, one should work with the total rated load obtained by subtracting the weights of the hooks, slings, etc. mounted on the boom from the total rated load of the boom.



TG-600M-1-10101

WORKING RADIUS - LIFTING HEIGHT

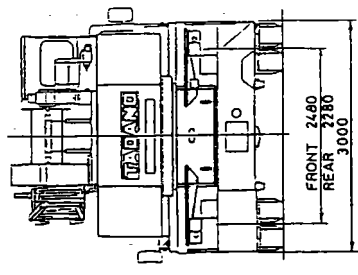
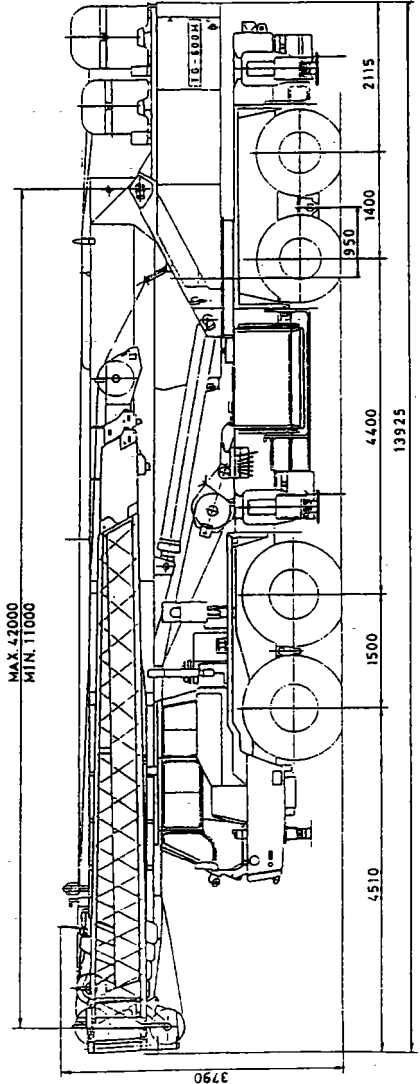
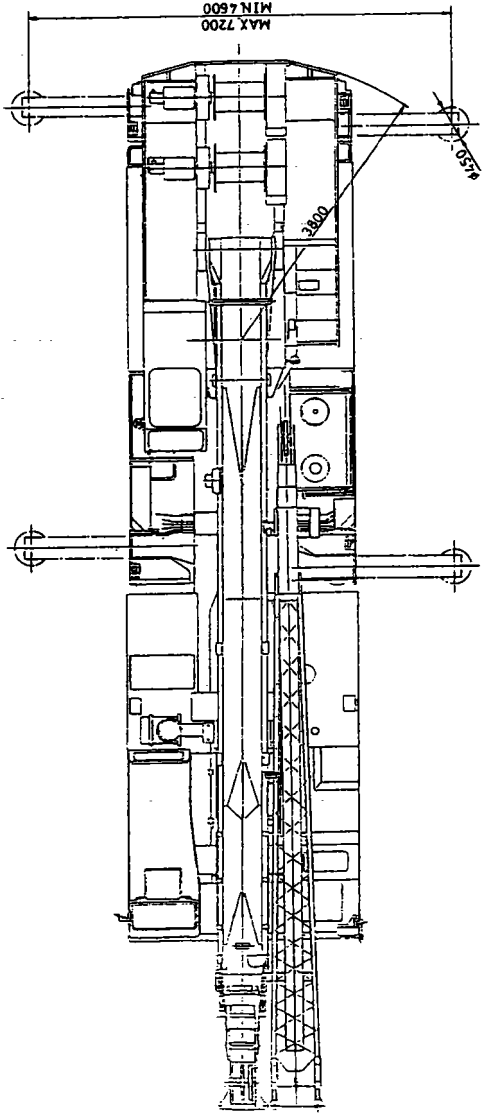


NOTES:

- 1. The deflection of the boom is not incorporated in the figure above.
- 2. The above chart is for the case where the outriggers are fully extended and where the front jack are used (over 360°)
- 3. The shaded area in the diagram applies only to the case when the device for heavy-duty work (option) is mounted.



DIMENSIONS (1/100)





◆ MEMO ◆

A series of horizontal dashed lines for writing a memo.